

Service Reference Job

Customer	Job Description	Year
<i>PTTEP S1</i>	<i>Shutdown 2014: Overhaul Bettis Actuator 26 units</i>	<i>2014</i>
<i>PTTEP S1</i>	<i>Replace Bettis Actuator G4016</i>	<i>2014</i>
<i>PTTEP S1</i>	<i>Replace El-O-Matic Actuator 12 Units and Bettis Actuator 3 units for loading bay</i>	<i>2015</i>
<i>PTTPLC</i>	<i>Overhaul Bettis Actuator 5 Units at Khanom</i>	<i>2015</i>
<i>TTM</i>	<i>Repair Shafer Valve actuator 1 unit</i>	<i>2018</i>
<i>Bangchak</i>	<i>Shutdown TAM-2018 Bettis Actuator 6 units</i>	<i>2018</i>
<i>PTTGSP</i>	<i>Service Sampling Probe Welker</i>	<i>2018</i>
<i>Chevron</i>	<i>Overhaul Bettis Actuator G8 series</i>	<i>2018</i>
<i>PTTPLC</i>	<i>Shafer HPU Service Offshore</i>	<i>2019</i>
<i>Chevron</i>	<i>Overhaul Bettis Actuator G3, G5 series</i>	<i>2019</i>
<i>Chevron</i>	<i>Grease Sealant Lubricated Valve Service</i>	<i>2019</i>

Service Reference Job(Continued)

<i>Customer</i>	<i>Job Description</i>	<i>Year</i>
<i>Splus/Benz</i>	<i>Flow calibration</i>	<i>2020</i>
<i>Cronate</i>	<i>Flow calibration</i>	<i>2020</i>
<i>PTTGSP</i>	<i>Overhaul Welker Probe Regulator</i>	<i>2020</i>
<i>PTTLNG</i>	<i>Overhaul Welker Probe Regulator & Commisioning</i>	<i>2021</i>
<i>PTTEP/TNS</i>	<i>Replaced Limit Switch by DVC 6200</i>	<i>2021</i>
<i>Bangchak</i>	<i>Shutdown TAM-2021 Bettis Actuator 6 units</i>	<i>2021</i>
<i>Chevron/FPSO</i>	<i>Service Bettis EHO at Chevron Benchamas, BFS02 Field</i>	<i>2021</i>
<i>PTTEP</i>	<i>Overhaul Solenoid valve Bifold at GBS</i>	<i>2021</i>
<i>PTTPLC Region 6</i>	<i>Overhaul Shafer Actuator size 14.5x14</i>	<i>2021</i>
<i>PTTPLC Region 8</i>	<i>Welker Sampling Probe Installation</i>	<i>2022</i>
<i>Mubadala</i>	<i>Local SAT Shutdown Valve</i>	<i>2022</i>
<i>Envertex</i>	<i>Local SAT Shutdown Valve</i>	<i>2022</i>

Service Reference Job(Continued)

Customer	Job Description	Year
<i>PTTEPI</i>	<i>Supervise the Installation of Actuator at Offshore (Myanmar)</i>	<i>2022</i>
<i>CPOC</i>	<i>Clearing for Diverter Valves (CPOC-5 , TPB & MDG) 56 units</i>	<i>2023</i>
<i>Chevron</i>	<i>NPCPP Project] RESDV-1381 Valve leak rectification</i>	<i>2023</i>
<i>TNS/PTTEP</i>	<i>Service Solenoid valve leak</i>	<i>2023</i>
<i>PTTEP ED</i>	<i>1604 PTTEP ED - OutsideG1(OS1) installation New Shafer HPU</i>	<i>2023</i>
<i>Chevron/FPSO</i>	<i>Service Bettis EHO (Electric actuator) at Chevron Benchamas, BFS02 Field</i>	<i>2023</i>
<i>Chevron</i>	<i>NPWV RC re-furbish, re-use SDV body with new actuator and accessories</i>	<i>2023</i>
<i>PTTLNG/ITS</i>	<i>Replace Versa Solenoid valve spare unit</i>	<i>2023</i>

Service Reference Job(Continued)

Customer	Job Description	Year
TTCL	Re-Test actuated ball valve	2024
Chevron	Re-Test SDV 2 & 10 #600 Inspection, Testing and Repair	2024
PTTGC	Supervisor for installation Actuator replacement	2024
TNS	Modification actuated ball valve	2024
Bangchak	Shutdown TAM-2024 Bettis Actuator 6 units	2024
SCS	MERCER PSV Training	2024
PTTEP ED	Replacement Shafer actuator SDV-6010 & Replace Valve stem O-Ring at ERCP	2024
Chevron	NPCPP TPSD Grease injection	2024
Chevron	PACPP TPSD Grease injection	2024
TNS	Supervised actuator mis-alignment 72 units	2024
TTM	Overhaul Shafer Actuator size 16.5x16 BV6	2024

Service Reference Job(Continued)

<i>Customer</i>	<i>Job Description</i>	<i>Year</i>
<i>PTTEP ED</i>	<i>Overhaul Shafer actuator SDV-6085 at ERCP</i>	<i>2024</i>
<i>Chevron</i>	<i>Grease injection SRWB VALVE GREASING FOR 1ST POP</i>	<i>2024</i>
<i>Chevron</i>	<i>16" Manual Valve 600# RF Stop Passing at MGWE South Pailin</i>	<i>2024</i>
<i>Chevron</i>	<i>24 PTT SDV-1381 grease nipple lubricant injection for fixing leak South Pailin</i>	<i>2025</i>
<i>CUEL</i>	<i>ACBV repaired and SAT test</i>	<i>2025</i>
<i>TNS</i>	<i>Supervise PMI valve test</i>	<i>2025</i>
<i>TNS</i>	<i>ART-ACBV Valve Misalignment</i>	<i>2025</i>
<i>TNS</i>	<i>BUN3-ACBV Valve Misalignment</i>	<i>2025</i>







Bangchak



Bangchak

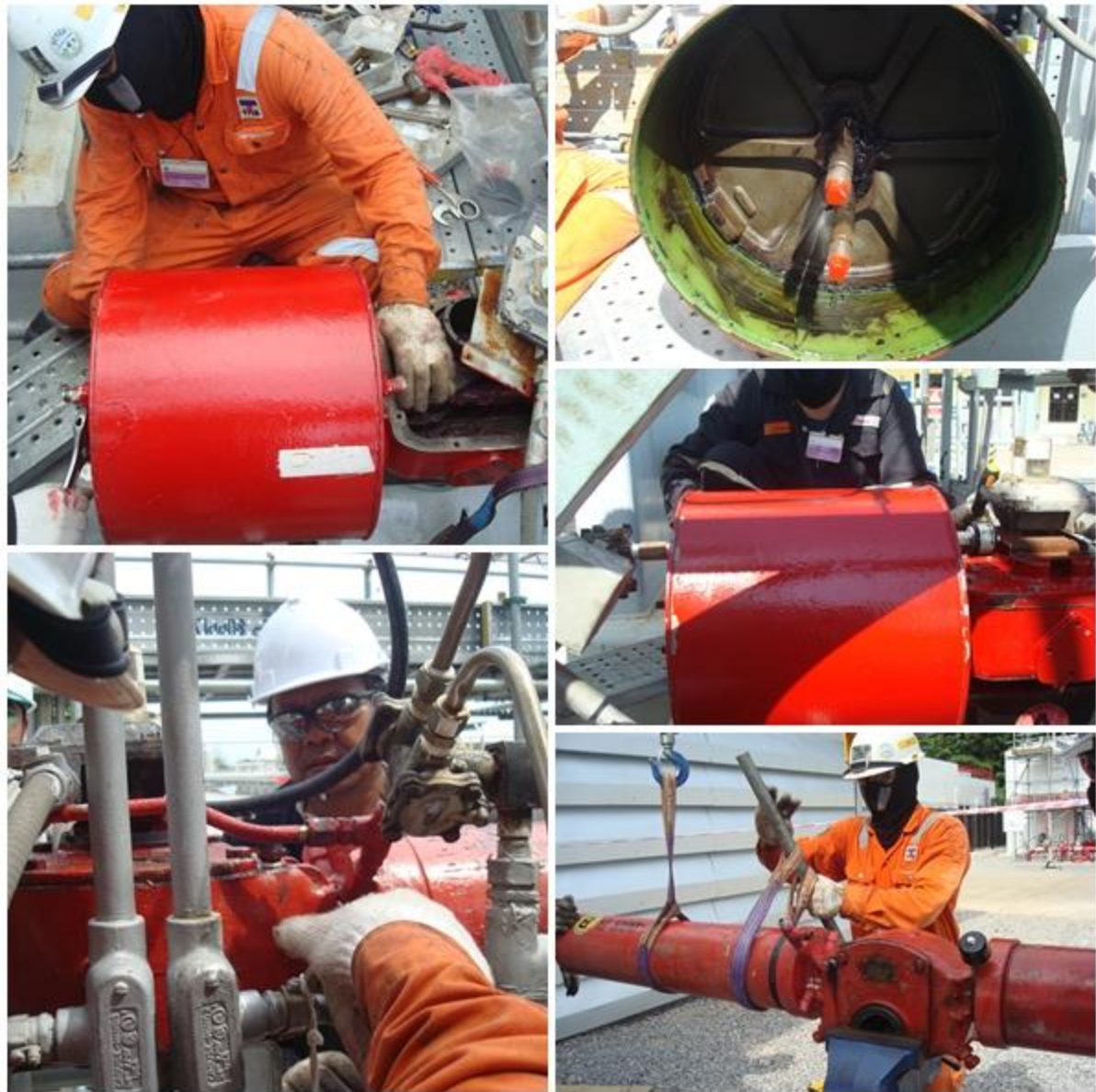




















TTM Songkhla



PTT Erawan (Shafer HPU)



Chevron (Shafer HPU)

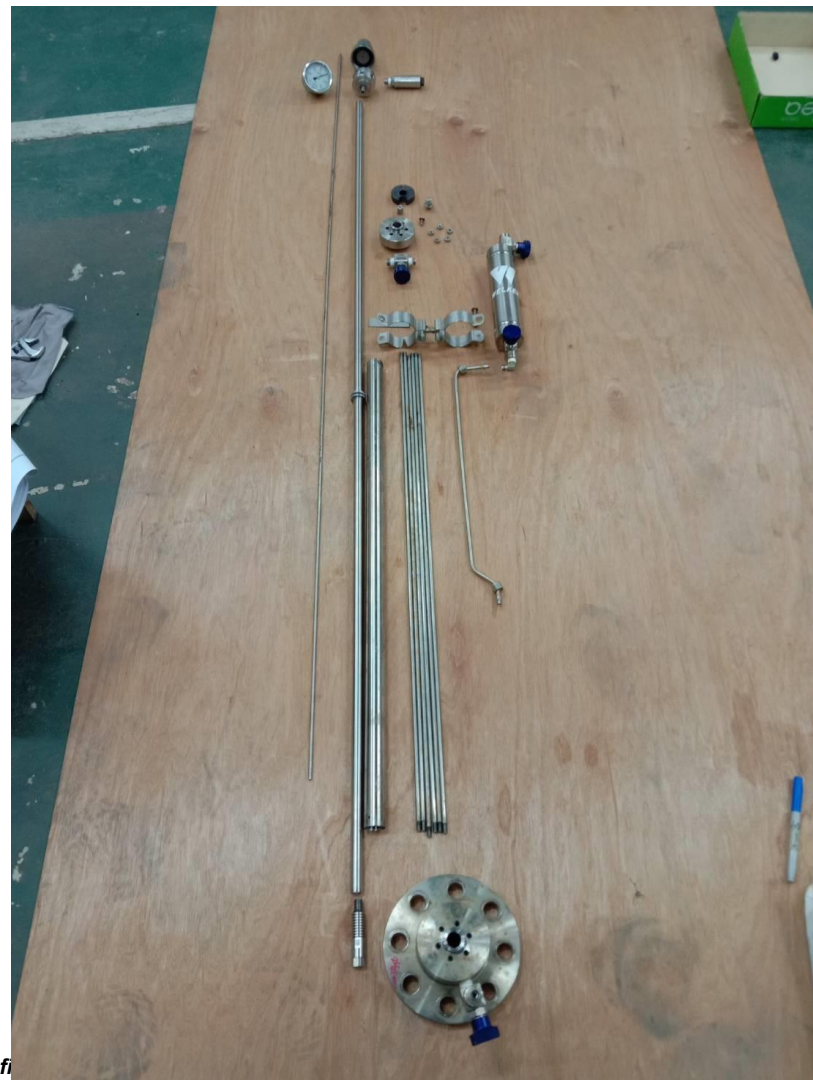


Welker Sampling Probe Service (PTT GSP - Change spare part - 2020)



Company Confidential

Welker Sampling Probe Service (PTT Pipeline (OSP) - Change spare part - 2020)

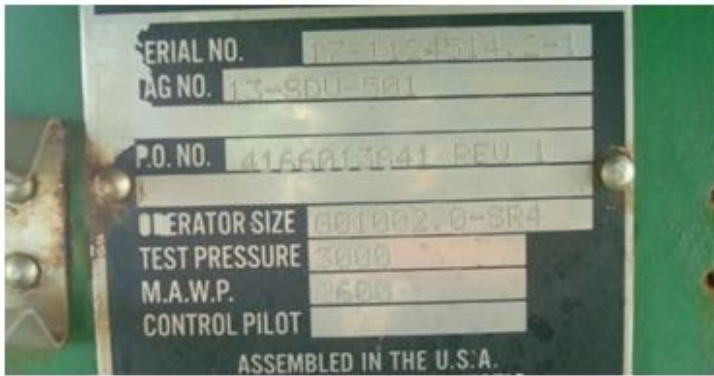


Welker Sampling Probe Service (PTT LNG - Installation and Commissioning - 2021)



Company Confidential

Chevron Benchamas (Bettis EHO) 2021



Bangchak Bettis Overhaul (TAM 2021)



PTTEP DVC Installation



Fig26: Function test signal to PLC



Fig27: Function test DVC = Fully closed
Travel - Closed = 1.05 min



Fig28: Function test DVC to HMI = 0.2%
Travel - Closed = 1.05 min



Fig29: Function test DVC = Fully Open
Travel - Open = 1.10 min



Fig30: Function test DVC to HMI = 100%
Travel - Open = 1.10 min



Fig31: Witness function test By CY.



Fig32: Test ESD from HMI to ESDV



Fig33: Test ESD from HMI to ESDV



Fig34: Status closed for ESD test

PTTPLC Region 6 Overhaul Shafer actuator 2021



PTTPLC Region 8 BVW-07 Welker Sampling Probe Installation 2022



PTTPLC Region 8 BVW-01 Welker Sampling Probe Installation 2022



CHEVRON STOP LEAK SMART PLUG PROJECT BENCHAMAS 2022



Fig1 : SDV -A9360



Fig2 : Inject Olivals-VF



Fig3 : Flushing pump for Olivals-VF



Fig4 : Inject Olivals-VF @1800 psi.



Fig5 : Lubricant / Sealant pump



Fig6 : Inject Olivals at grease port

Mubadala Local SAT 2022



Envertex Local SAT 2022



Supervise the Installation of Actuator at Offshore (Myanmar)



Clearing for Diverter Valves (CPOC-5 , TPB & MDG)



NPCPP Project RESDV-1381 Valve leak recification



Service Solenoid valve leak



1604 PTTEP ED - OutsideG1(OS1) installation New Shafer HPU



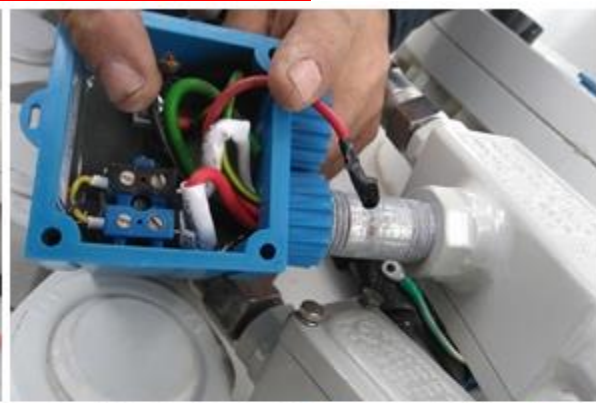
Service Bettis EHO (Electric actuator) at Chevron Benchamas, BFS02 Field



NPWV RC re-furbish, re-use SDV body with new actuator and accessories



Replace Versa Solenoid valve (exia)





8232794
CLASS 300
4.4 200
5.1 40
DN 2000 (80, 200)
17.4 216 100 LPS
16000
7.7
NO 1157
100 - 150001000

Chevron **Re-Test SDV 2 & 10 #600 Inspection, Testing and Repair**



PTTGC *Supervisor for installation Actuator replacement*











